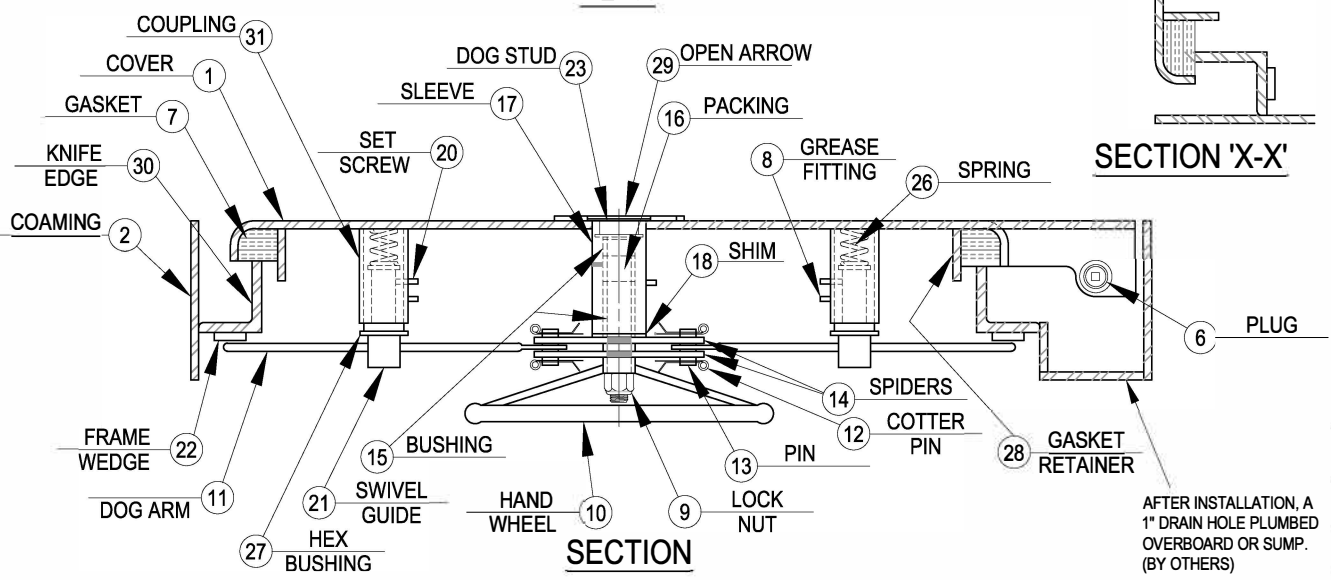
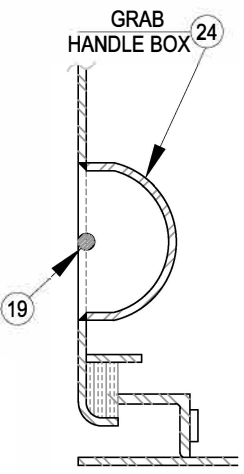


**NOTES:**  
 1. AFTER INSTALLATION, A 1" DIAMETER DRAIN HOLE MUST BE INSTALLED AT THE LOW POINT IN THE HINGE BOX AND DRAINED OVERBOARD OR TO A SUMP TO PREVENT CORROSION OR LEAKAGE. (BY OTHERS)



| SCHEDULE OF MATERIALS |              |            |
|-----------------------|--------------|------------|
| PC.                   | MATERIAL     | REMARKS    |
| 1                     | MILD STEEL   |            |
| 2                     | MILD STEEL   |            |
| 3                     | MILD STEEL   |            |
| 4                     | STAINLESS    |            |
| 5                     | COLD FINISH  |            |
| 6                     | MILD STEEL   |            |
| 7                     | NEOPRENE     |            |
| 8                     | PLATED STEEL |            |
| 9                     | STAINLESS    |            |
| 10                    | MILD STEEL   |            |
| 11                    | COLD FINISH  |            |
| 12                    | STAINLESS    |            |
| 13                    | BRASS        |            |
| 14                    | MILD STEEL   |            |
| 15                    | DELTRIN      |            |
| 16                    | TEFLON       |            |
| 17                    | MILD STEEL   |            |
| 18                    | STAINLESS    |            |
| 19                    | MILD STEEL   |            |
| 20                    | PLATED STEEL |            |
| 21                    | BRASS        |            |
| 22                    | STAINLESS    |            |
| 23                    | BRASS        |            |
| 24                    | MILD STEEL   |            |
| 25                    | MILD STEEL   |            |
| 26                    | PLATED STEEL |            |
| 27                    | BRASS        |            |
| 28                    | MILD STEEL   |            |
| 29                    | STAINLESS    | 316L ALLOY |
| 30                    | MILD STEEL   |            |
| 31                    | MILD STEEL   |            |



Turner Supply  
 251-438-5581 or [contact@turnersupply.com](mailto:contact@turnersupply.com)  
**QUICK ACTING WATERTIGHT FLUSH HATCH**  
 DWG. NO.: 205-MS

AFTER INSTALLATION, A 1" DRAIN HOLE PLUMBED OVERBOARD OR SUMP. (BY OTHERS)