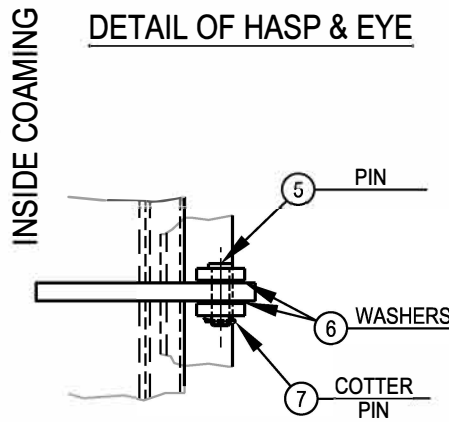
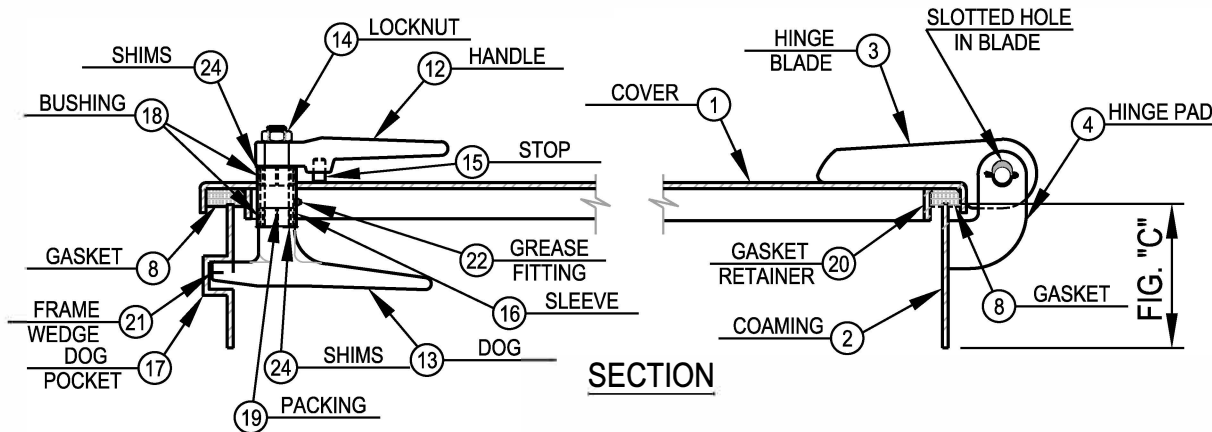


DETAIL OF HASP & EYE



DETAIL OF HINGE



SECTION

SCHEDULE OF MATERIALS

| PC. | MATERIAL | REMARKS |
|-----|--------------|---------|
| 1 | MILD STEEL | |
| 2 | MILD STEEL | |
| 3 | MILD STEEL | |
| 4 | MILD STEEL | |
| 5 | BRASS | |
| 6 | STAINLESS | |
| 7 | STAINLESS | |
| 8 | NEOPRENE | |
| 9 | STEEL | |
| 10 | MILD STEEL | |
| 11 | MILD STEEL | |
| 12 | FRG. STEEL | |
| 13 | FRG. STEEL | |
| 14 | PLATED STEEL | |
| 15 | STEEL | |
| 16 | STEEL | |
| 17 | STEEL | |
| 18 | DELTRIN | |
| 19 | TEFLON | |
| 20 | MILD STEEL | |
| 21 | FRG. STEEL | |
| 22 | PLATED STEEL | |
| 23 | MILD STEEL | |
| 24 | STAINLESS | |



Turner Supply
 251-438-5581 or contact@turnersupply.com
 WATER TIGHT HATCH
 DWG. NO.: 201-MS